

After clicking the "Click Here to Upload" button, you should see a new window or tab with the LithExcel ftp site open:

Book Publishing Submission Form

Please complete the form below to receive a quote for a file so that we can locate it once it is uploaded to our server. If you have any questions regarding this form, or would like to receive a quote, please contact our customer service department.

- Ricci Warmkessel T: (505) 998-9702
- Arlene Mirabal T: (505) 243-8573

Start by uploading your PDF-X compatible* PDF file.
* For a tutorial on creating PDF-X compatible files

See our [help.pdf](#) file for step-by-step instructions

[Click Here to Upload](#)

(This will open up in a separate tab/window or pop-up)

Once your upload is complete, please tell us what you would like to do below:

Filename of your book:

Your File Name

Title of your book:

Your Book Title

Your Name:

Your First and Last Name

Your Email Address:

Your Email Address

Your Phone Number:

Your Phone Number

LITHExcel

Webinterface - Windows Internet Explorer
http://ftp.lithexcel.com/

LITHExcel
MARKETING
SERVICES PROVIDER

BookPub

Upload Logout

Filter: Clear Select Show 100 items on page Thumbnail View Tree View

1 Items (1 Files)

<input type="checkbox"/>	Name	Size
<input type="checkbox"/>	help.pdf	32.3 KiloBytes

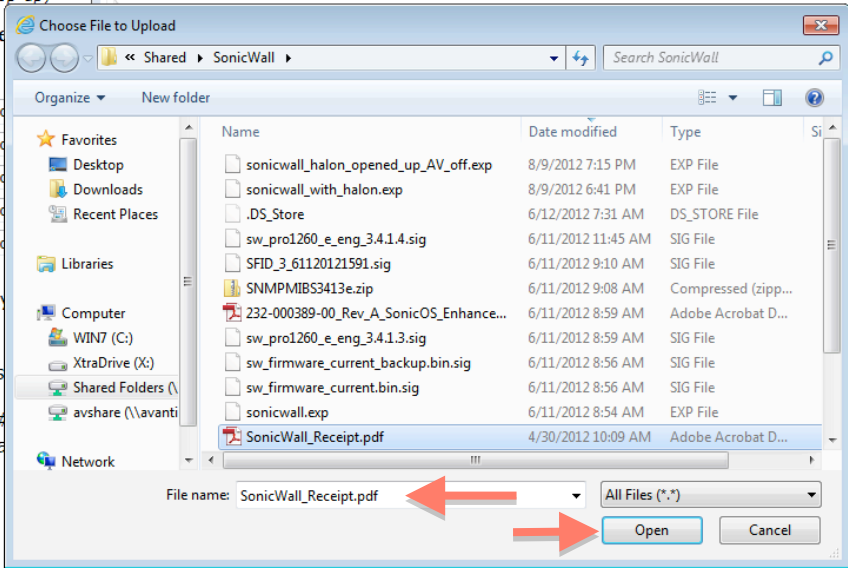
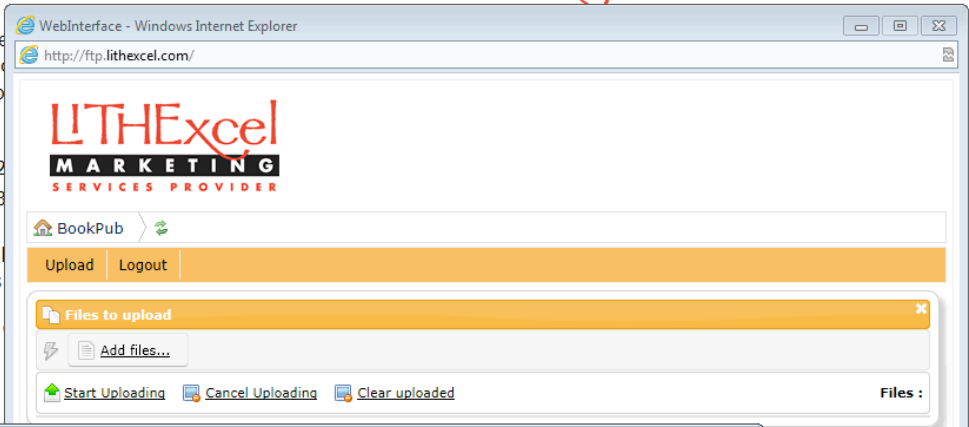
Powered by [CrushFTP](#) © 2012 [CrushFTP](#) (Session timeout in 59 min, 41 secs.) [Back to top](#)

Next, click on the orange colored "Upload" button, and you will see an "Add Files" button. - Click on the "Add files" button:

The screenshot displays a web browser window titled "WebInterface - Windows Internet Explorer" with the address bar showing "http://ftp.lithexcel.com/". The main content area features the LithExcel Marketing Services Provider logo. Below the logo is a navigation bar with a "BookPub" link and "Upload" and "Logout" buttons. A red arrow points to the "Upload" button. Below the navigation bar is a "Files to upload" section with a close button (X). This section contains an "Add files..." button, which is highlighted by a red arrow. At the bottom of the "Files to upload" section are three buttons: "Start Uploading", "Cancel Uploading", and "Clear uploaded", followed by a "Files :" label.

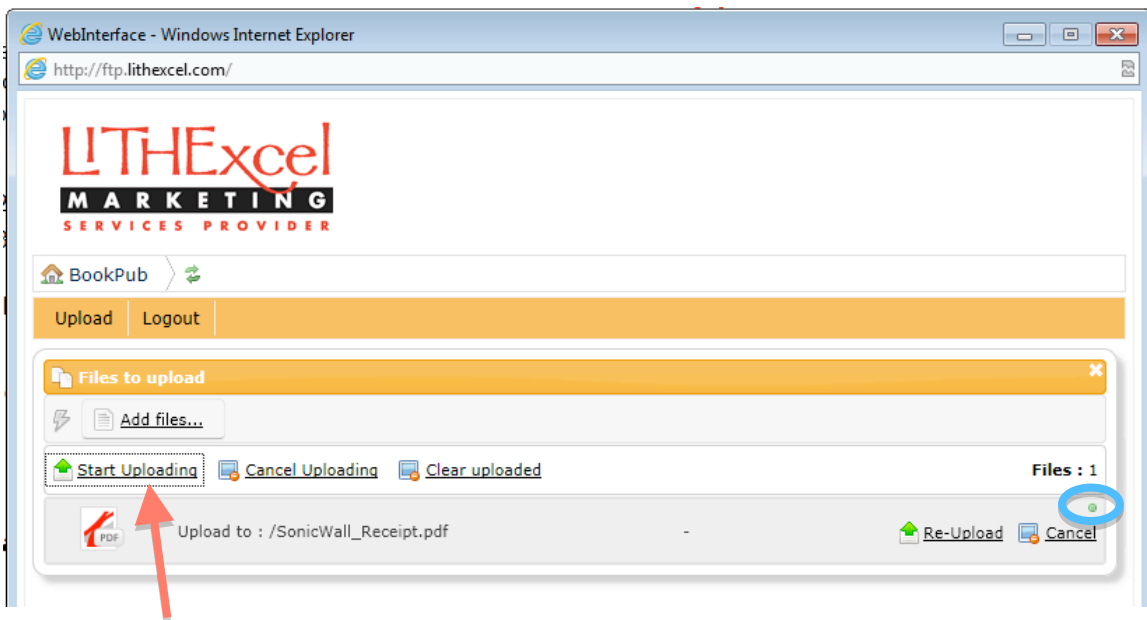
Next, a "Choose File to Upload" window will open, allowing you to select your PDF file for upload to our site:

Submission Form



Once you have selected your file for upload you will be returned to the Files to upload box, where you can add more files to upload, or if you are finished choosing, you can click the link to "Start Uploading":

You should see a progress bar showing the transfer progress, and when finished, the little "light" on the right-side of the window, will show green for success:



The screenshot shows a web browser window titled "WebInterface - Windows Internet Explorer" with the address bar displaying "http://ftp.lithexcel.com/". The main content area features the "LITHExcel MARKETING SERVICES PROVIDER" logo. Below the logo is a navigation bar with "BookPub" and a refresh icon. A secondary navigation bar contains "Upload" and "Logout" buttons. The primary interface is a "Files to upload" panel. This panel includes an "Add files..." button, a "Start Uploading" button (highlighted with a red dashed box and a red arrow), a "Cancel Uploading" button, and a "Clear uploaded" button. On the right side of the panel, it indicates "Files : 1". Below the buttons, a file named "SonicWall_Receipt.pdf" is shown with a red arrow pointing to it. At the bottom right of the file list, there are "Re-Upload" and "Cancel" buttons. A small green circular indicator is circled in blue on the right side of the file list area.

After you are finished uploading you can click on the "X" in the upper-right-corner of the ftp window to close it out.

WebInterface - Windows Internet Explorer

http://ftp.lithexcel.com/

LITHExcel

MARKETING

SERVICES PROVIDER

BookPub

Upload Logout

Filter: Clear Select Show 100 items on page Thumbnail View Tree View

2 Items (2 Files)

<input type="checkbox"/>	Name	Size
<input type="checkbox"/>	helpo.pdf	32.3 KiloBytes
<input type="checkbox"/>	SonicWall_Receipt.pdf	92.84 KiloBytes

Powered by [CrushFTP](#) © 2012 [CrushFTP](#) (Session timeout in 59 min, 20 secs.) Back to top